

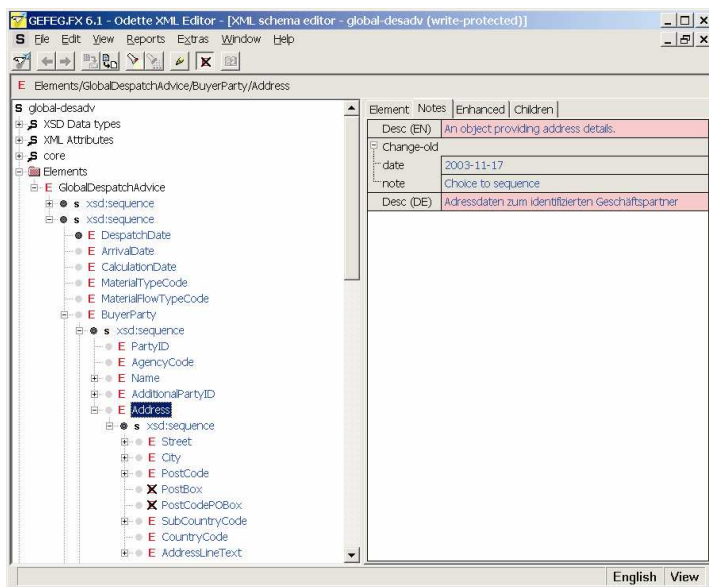
Odette XML Editor

getting started with XML the easy way

Mutual understanding with your trading partners is best achieved when you both speak the same language and use the same words. This simple but basic truth also applies for your computer systems in EDI communication.

The Odette XML Editor supports users in reaching a common understanding for data interchange by offering the first comprehensive XML based data set tailored to the needs of the automotive industry. Odette, the data standards organization for the European automotive industry and GEFEG offer the Odette XML Editor in co-operation.

Moreover, as an international working group from the leading automotive organizations worldwide (Odette, AIAG and JAMA/JAPIA) has worked on the harmonisation of these messages in their EDIFACT format, the data is especially suited for use in global business.



Guaranteed Odette-compliant Profiles

Using the Odette XML Editor, you are freed from the task of developing XML schemas from scratch. Simply use the data as is, or develop profiles - so-called implementation guidelines - that reflect your national, or your company use of the automotive standard data. The Odette XML Editor enables you to further tailor the Odette standards within defined limits and save your own specific applications of the Odette standards as profile schema. This allows for a guaranteed compliance with Odette standard specifications within a shorter timescale.

The maintenance of your data in regard to updates of the standard data is no longer a time-consuming task. Whenever the underlying standard data is updated, the profile that you created remains in the form that you require.



Includes Automotive Standard Data, based on Odette Automotive XML Recommendations

- JADM XML Representation
 - Global Delivery Forecast
 - Global Delivery Instruction
 - Global Despatch Advice
 - Global Invoice
 - Global Remittance Advice
- Odette B2B Messages
 - Partner Identification Data
 - Portal User Administration
 - Portal Access Management
 - Packaging Management
- OAGIS Messaging Framework (Transmission of BODs)

Your Advantage

- Trustworthy implementation – guaranteed compliance with Odette standard specifications
- Easy way to derive guidelines / profiles
- Country or company specific documentation
- Multi-language ability in guidelines
- High quality data exchange and increased interoperability.
- Speeds up the implementation of XML and reduces development time





Features

- View, browse, reference the original specification
- Record translation and documentation in your national language
- Create Implementation Guidelines (Profiles) for your regional, national, or company related business environment
- Validate your Implementation Guidelines against Odette standard specifications
- Generate human readable documentation in HTML, CHM and RTF format

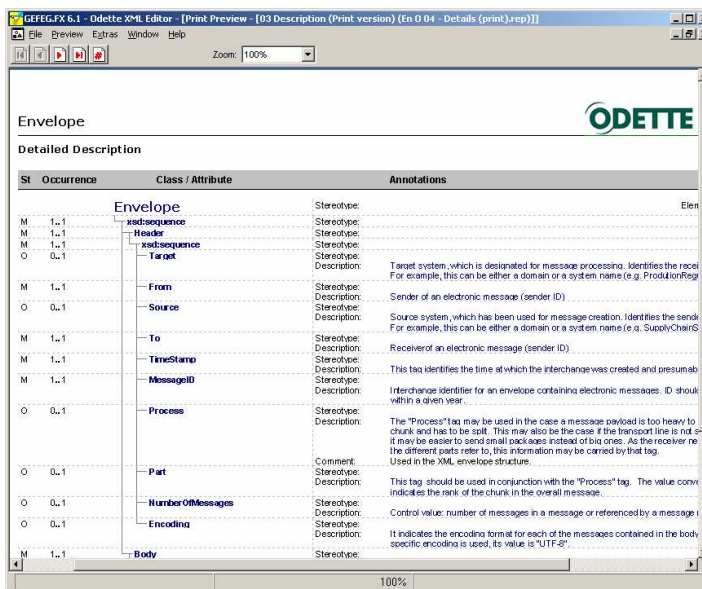
Full XML Editing capabilities

Besides viewing, browsing and referencing the automotive standard, you can also specify the profile schemas derived from the standards with the Odette XML Editor. Within the limits of the underlying standard, the Odette XML Editor enables you to describe your specific application through context-specific modification of cardinalities, restriction of codes, and context-specific descriptions. The unique ability to record context-specific descriptions eliminates the need to use schema editors side by side with spreadsheets, and so guarantees consistent, high-quality guidelines for your trading partners or software developers.

Single Source for Sample Files, Documentation and Validation

Having finalised the specification process, you may use the profiles for different additional tasks;

- Generate XML sample files for easy comprehension of the message format
- Generate XML Schematron files for validation
- Generate human-readable documentation in html-, chm-, and rtf-format



Intelligent, qualified business information design for your success in e-Business

GEFEG mbH
 Berlin, Germany
 Phone: +49-30-979914-0
 E-Mail: info@gefeg.com
 Internet: www.gefeg.com

Odette International Ltd
 London, UK
 Phone: +44 207 344 9227
 E-Mail: info@odette.org
 Internet: www.odette.org

